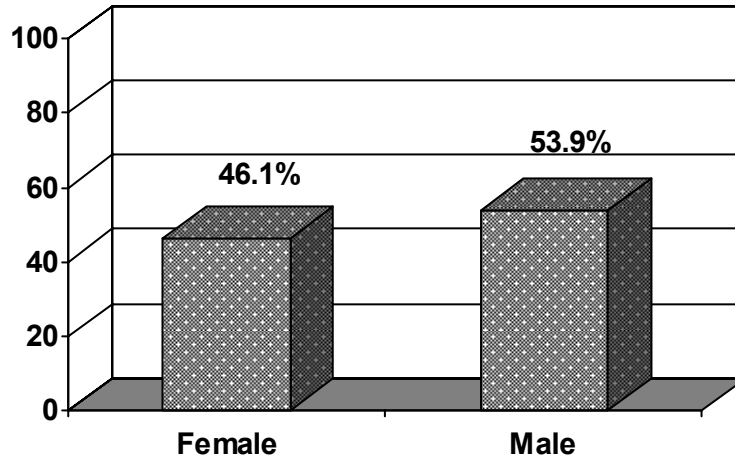


# **Appendix A (Survey Results)**

**Scroll Down**

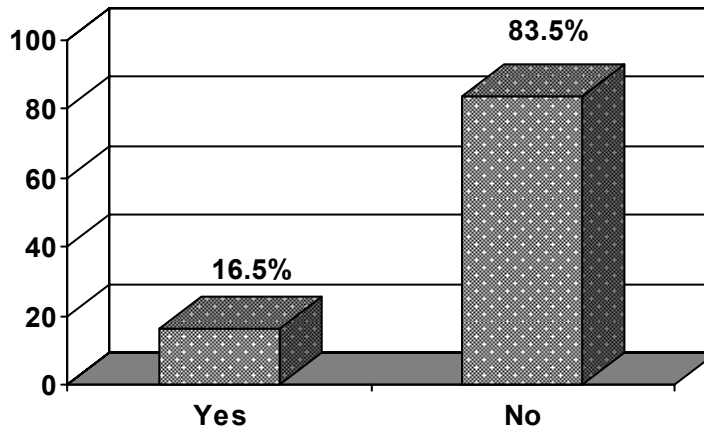
**RECREATIONAL USER TENDENCIES**

**What is your gender?**



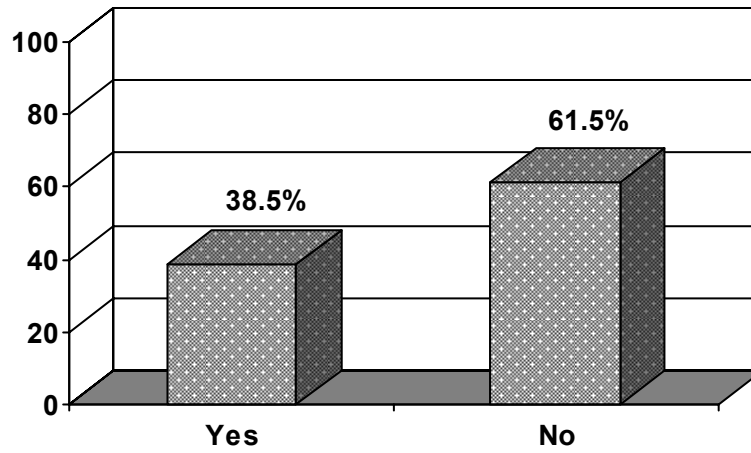
- Slightly over half of the on-site interviews at Coopers Rock were conducted with Male respondents (54%).
- n = 115.

**Is this your first visit to Coopers Rock?**



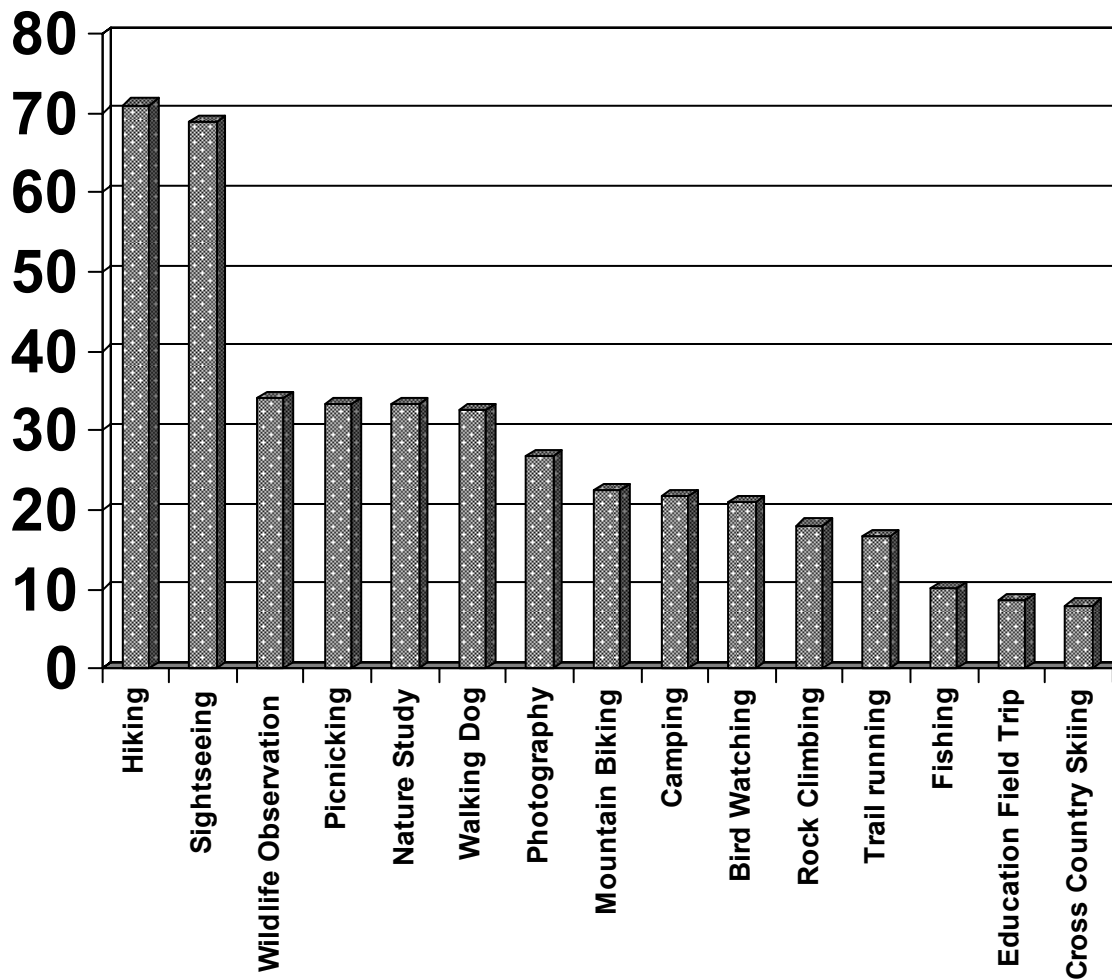
- The vast majority of respondents were repeat visitors, with just 16% of respondents being first time visitors to Coopers Rock.
- n = 115.

## Do you recreate as often as you would like at Coopers Rock?



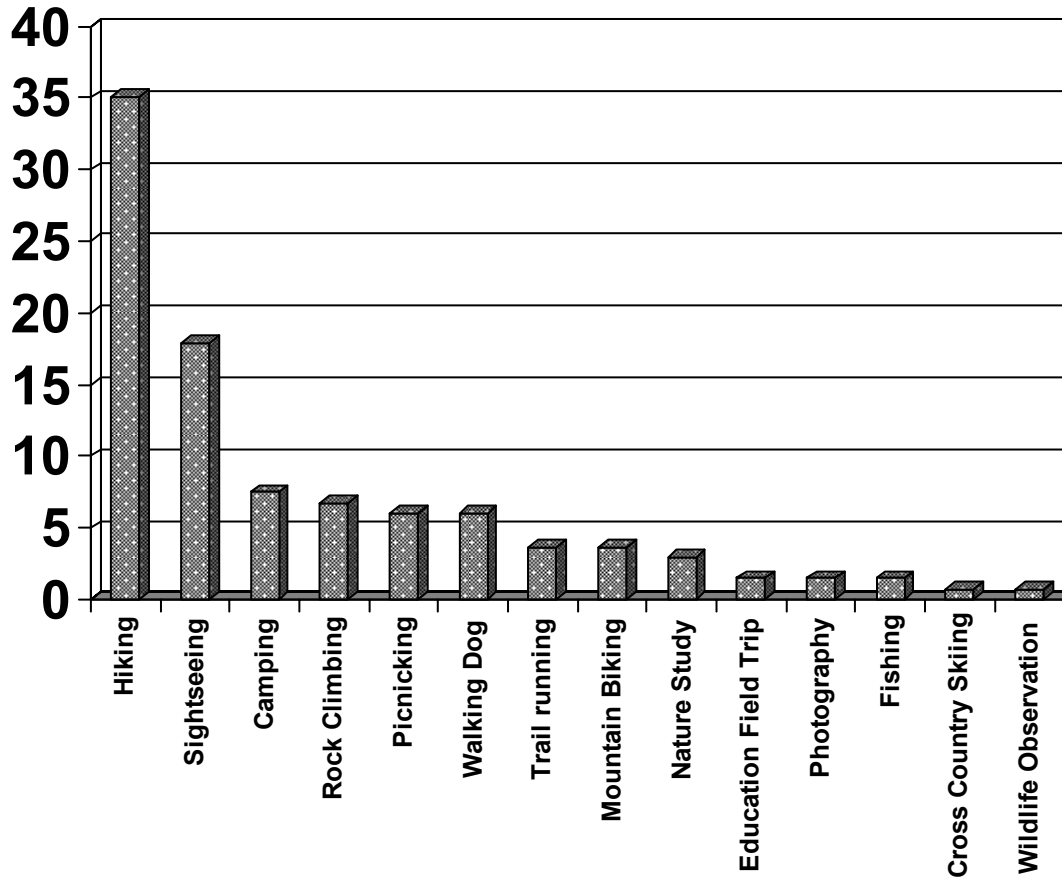
- Nearly two-thirds of the respondents (62%) reported they were not able to recreate at Coopers Rock as often as they would like.
- n = 122.

## Which activities have you participated in at Coopers Rock this year?



- Hiking (71%) and Sightseeing (69%) were the two most popular activities among respondents who participated in the on-site survey.
- Horseback riding, hunting, scouting for hunting, snow shoeing, geo-caching, mushroom/berry gathering, and trail blazing were all activities that were participated in by less than 6% of the on-site survey respondents.
- n = 115.

## What is your primary activity at Coopers Rock?

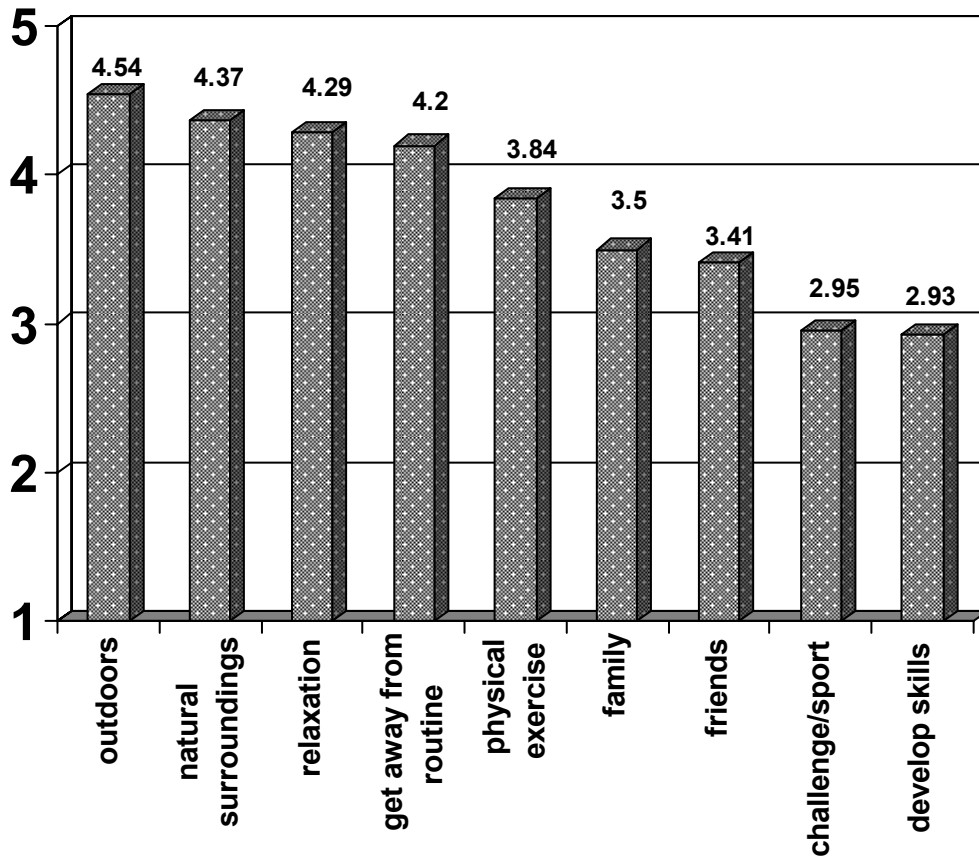


- The number one primary activity among the respondents was hiking (35%).
- Sightseeing was the second most popular primary activity (18%).
- Exercising/walking dog, camping, picnicking, and rock climbing were mentioned by the respondents as primary activities for recreation users (between 6% - 8% each).
- n = 115.

## How important are the following reasons as to why you may recreate at CRSF?

Importance of experience	Mean
To be outdoors	4.54
To experience natural surroundings	4.37
To relax	4.29
To get away from routine	4.20
For physical exercises	3.84
For family recreation	3.50
To be with friends	3.41
For challenge/sport	2.95
To develop my skills	2.93

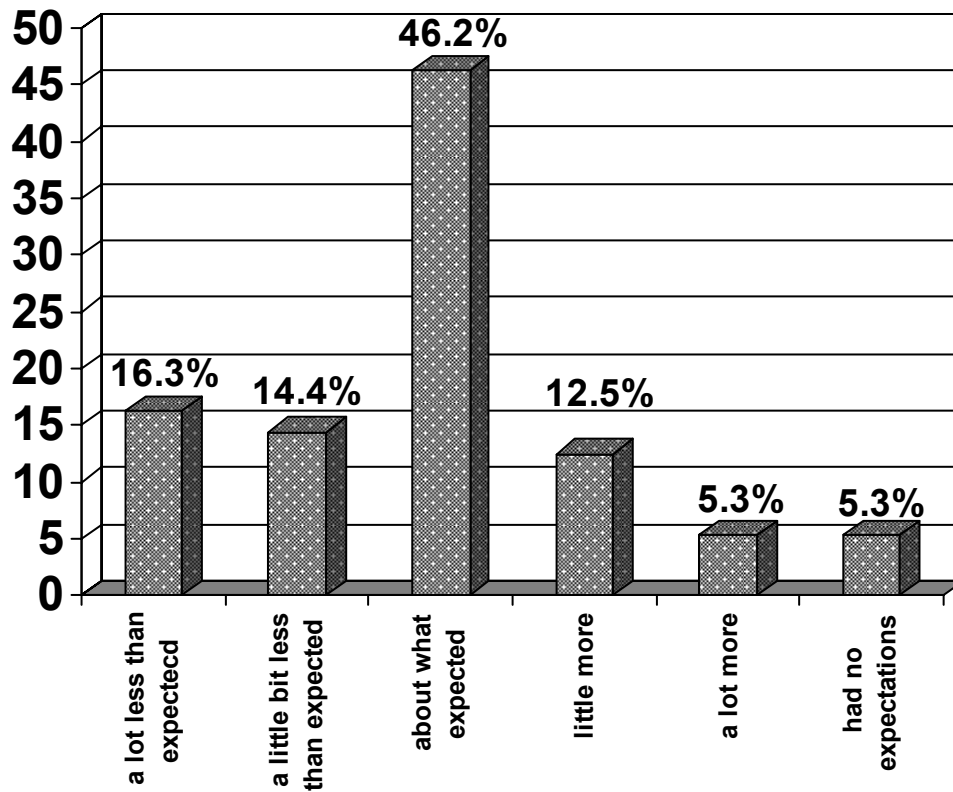
Note. Response Code: 1 = "not at all important" to 5 = "extremely important". n=136.



- Recreation users at CRSF have the most value for experiences such as being outdoors, being in natural surroundings, relaxing, and getting away from the regular routine of their lives.
- n = 136.

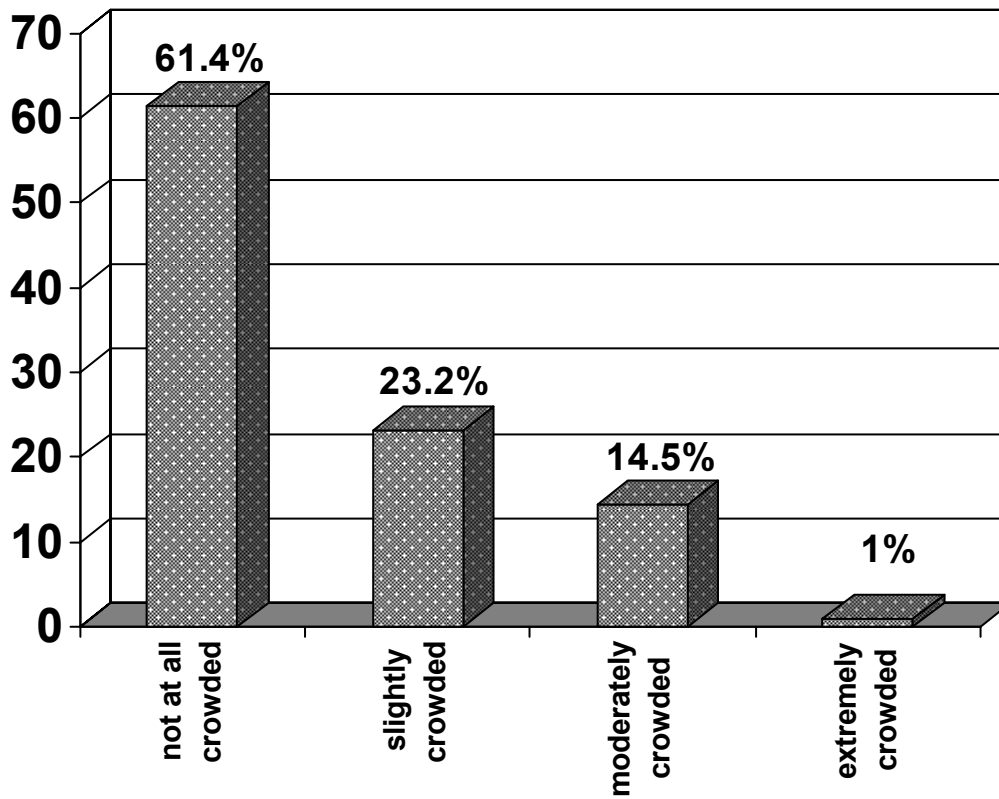
CROWDING

How does the number of people you saw compare with what you expected to see?



- Almost half (46%) of the respondents saw the same amount of people at CRSF as what they expected to see.
- Nearly two-thirds (31%) of respondents saw less people than what they expected to see.
- Only 18% of the respondents felt that there were more people at CRSF than they expected to see.
- n = 208.

## How crowded did you feel on this visit?

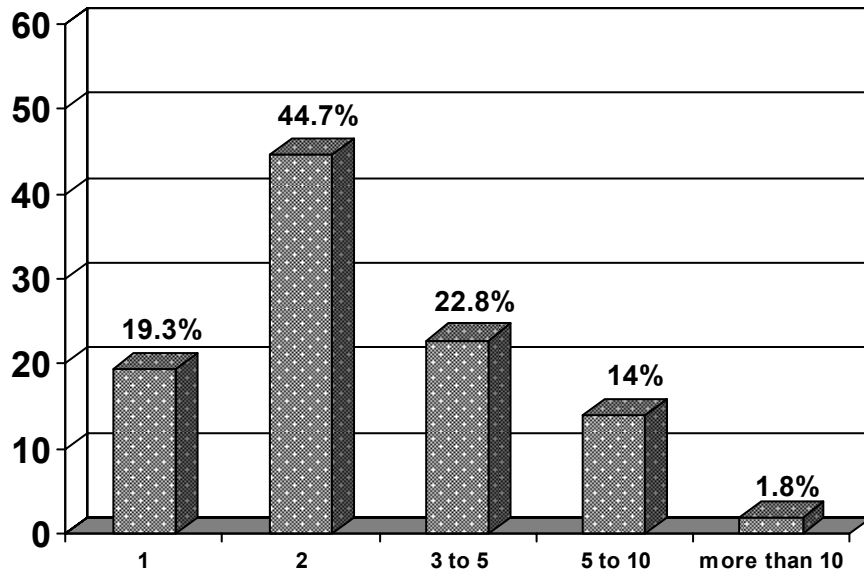


- Nearly two-thirds (61%) of the respondents were not at all crowded at CRSF.
- Over one-third of the respondents were slightly to moderately crowded.
- n = 207.



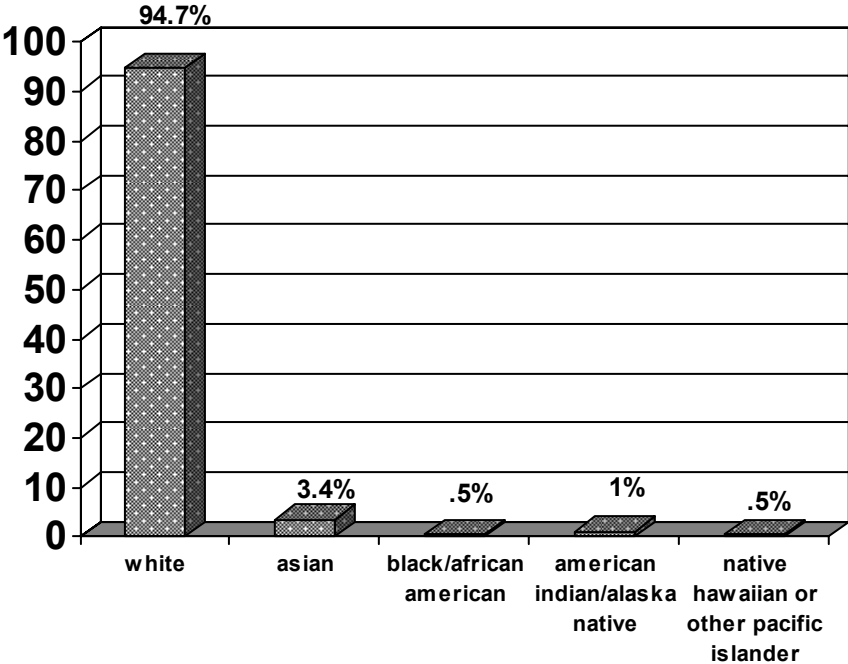
**DEMOGRAPHICS**

**How many people are in your group today?**



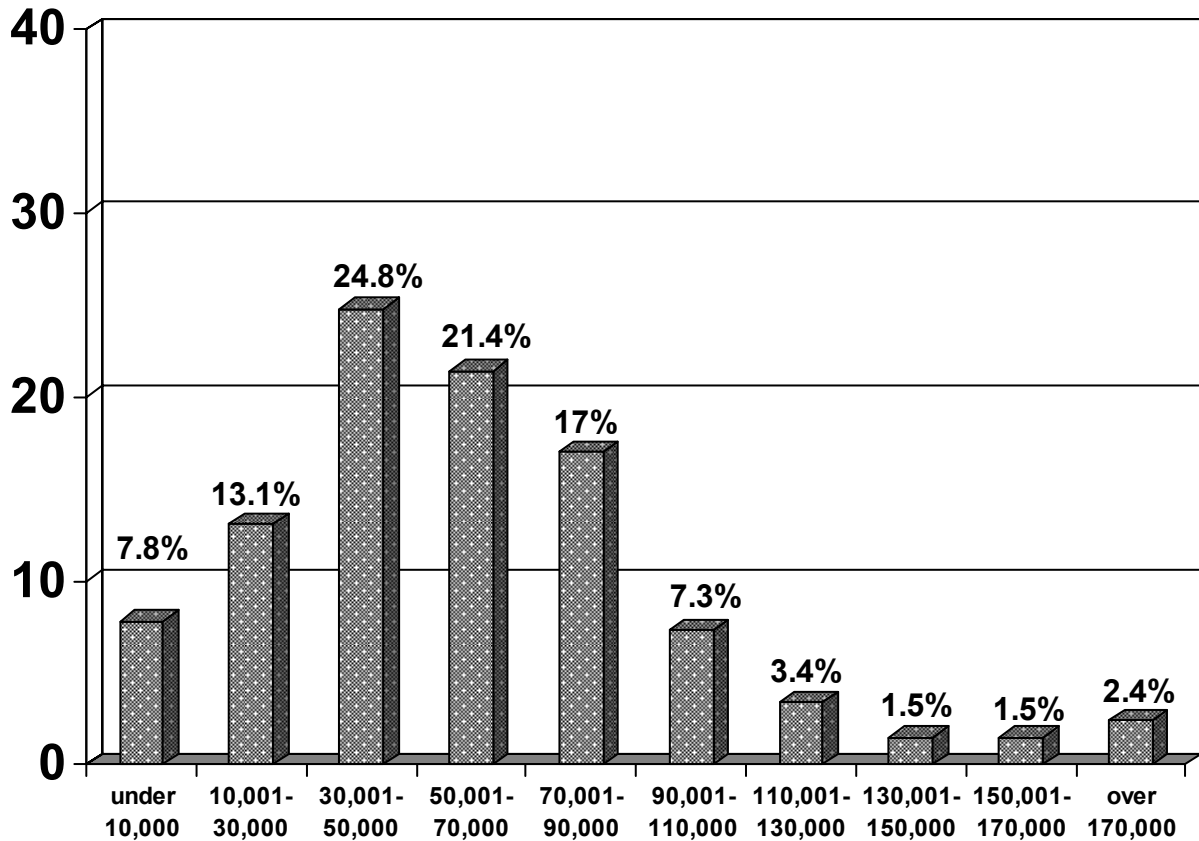
- The largest proportion (45%) of respondents came to CRSF in a group of two.
- Over one-third (37%) of the respondents were in larger groups (3—10 people).
- About one-fifth (19%) of the respondents were visiting CRSF alone.
- n = 114.

**Which racial group do you most closely identify yourself with?**



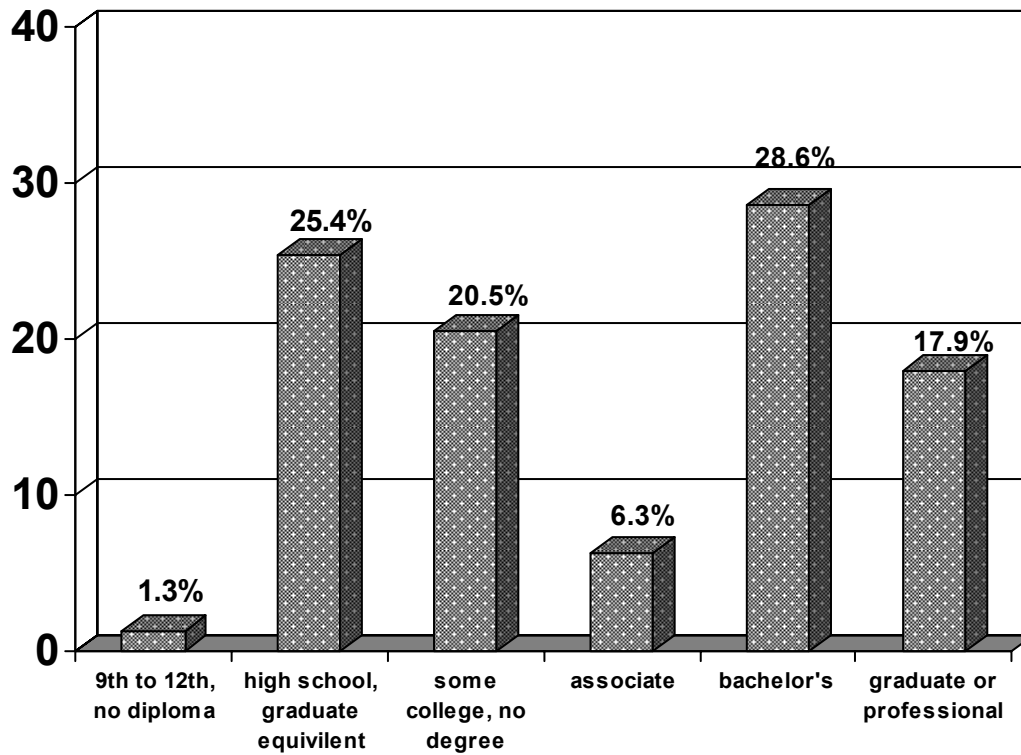
- The vast majority (95%) of the respondents identified themselves as being white.
- n = 226.

## What was your total household income last year?



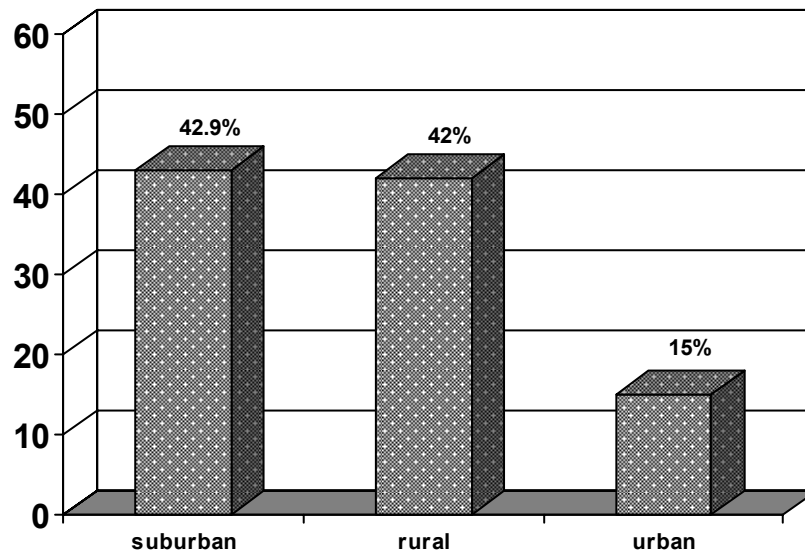
- Nearly half (46%) of the respondents identified with a total household income of \$30,000 -- \$70,000 annually, while nearly one-quarter (24%) indicated that they earned between \$70,000--\$110,000 annually.
- About one-fifth (21%) reported their income was \$30,000 or below.
- A small proportion (9%) reported a total household income greater than \$110,000.
- n = 206.

### What is the highest level of schooling you have completed?



- Almost half (46%) of the respondents indicated that they had a high school degree without a college degree.
- Almost half (47%) of the respondents reported having a bachelor's degree or advanced degree.
- n = 226.

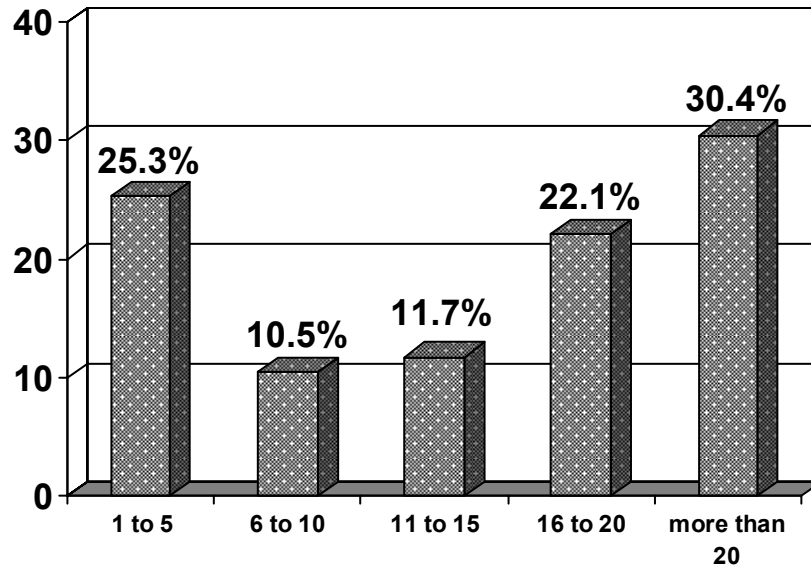
**Do you consider yourself to be living in an urban, suburban, or rural community?**



- Most of the respondents reported that they lived in either a suburban (43%) or rural (42%) community.
- Only 15% of the respondents identified themselves as currently living in an urban community.
- n = 226.

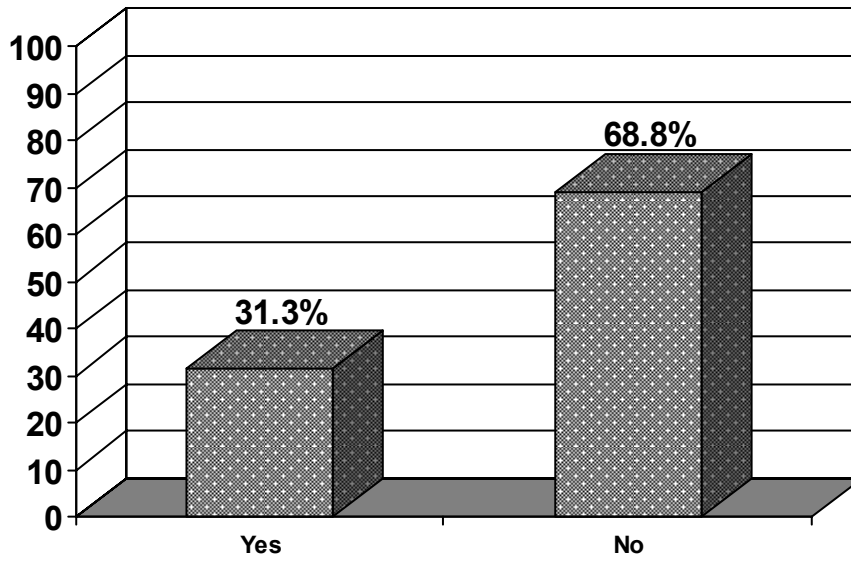
STUDY OF HUNTERS

**How many years have you been hunting at Coopers Rock?**



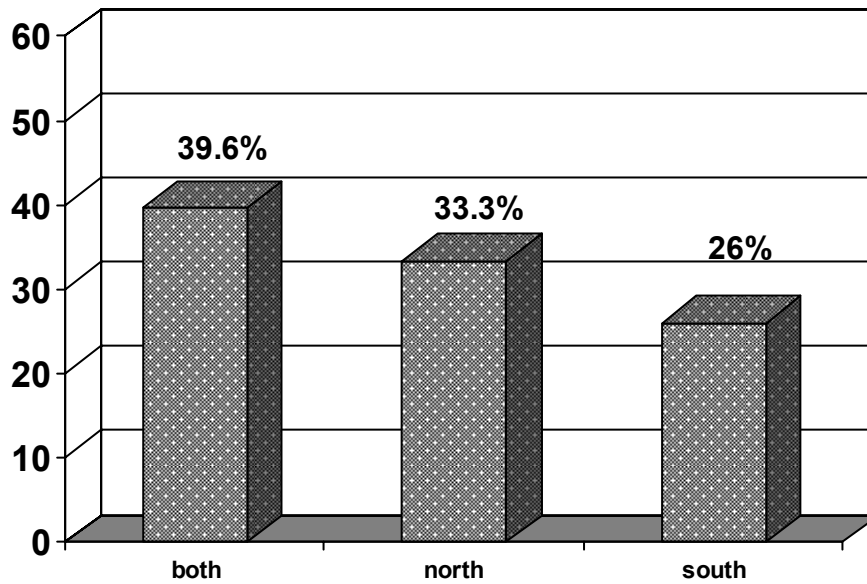
- Hunters showed a bipolar response in the number of years they have hunted at CRSF, with nearly one-third (30%) of the respondents hunting for more than 20 years and one-quarter (25%) of the respondents hunting five years or less.
- n = 95.

### Are you a resident license holder?



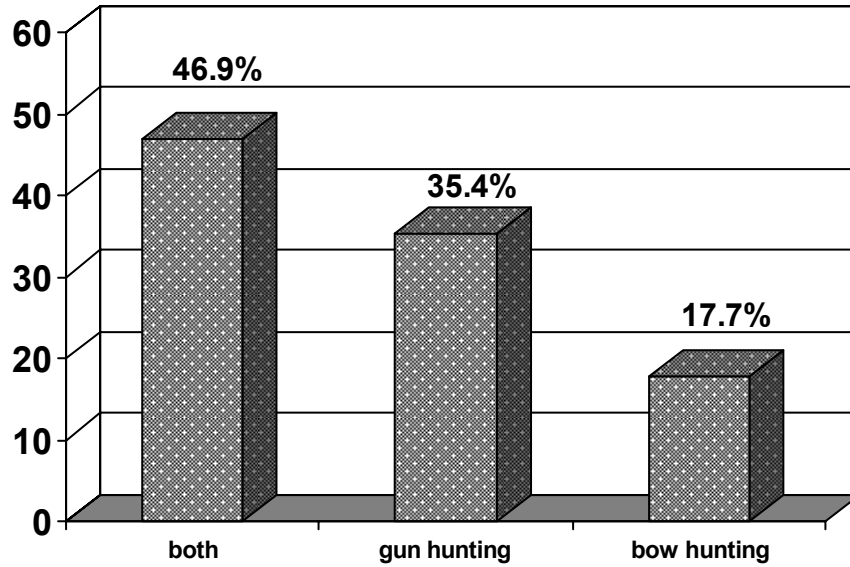
- The majority of respondents (69%) were not resident license holders from the state of West Virginia.
- n = 95.

### Where do you hunt at Coopers Rock?



- The largest proportion of the respondents (40%) hunt on both the north and south side of the Forest.
- n =96.

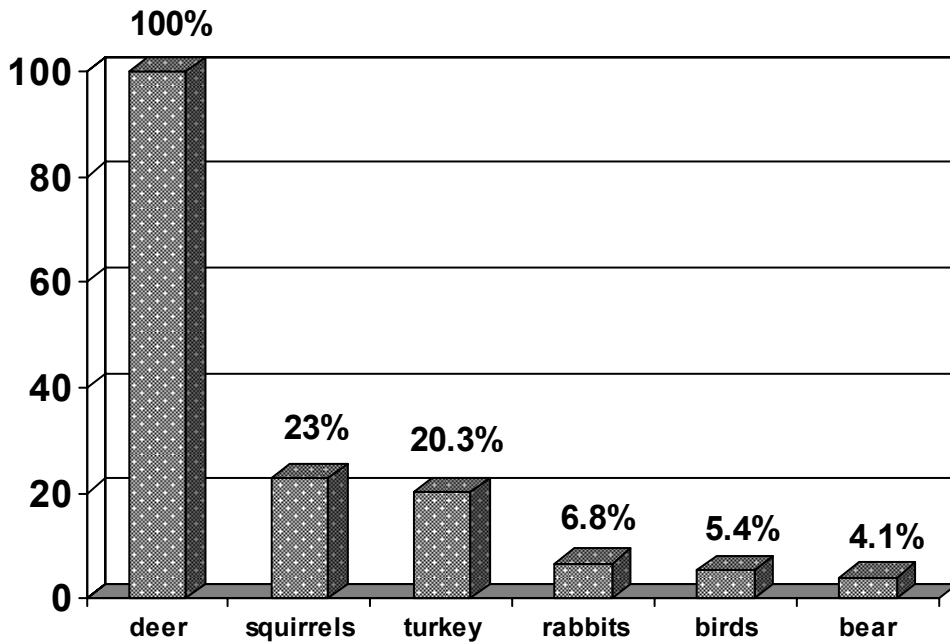
### What type of hunting do you prefer?



- Nearly half (47%) of hunters at the CRSF prefer to hunt with both a gun and bow.
- Over one-third of the respondents hunt only with a gun, while nearly one-fifth (18%) only bow hunt.
- n = 96.

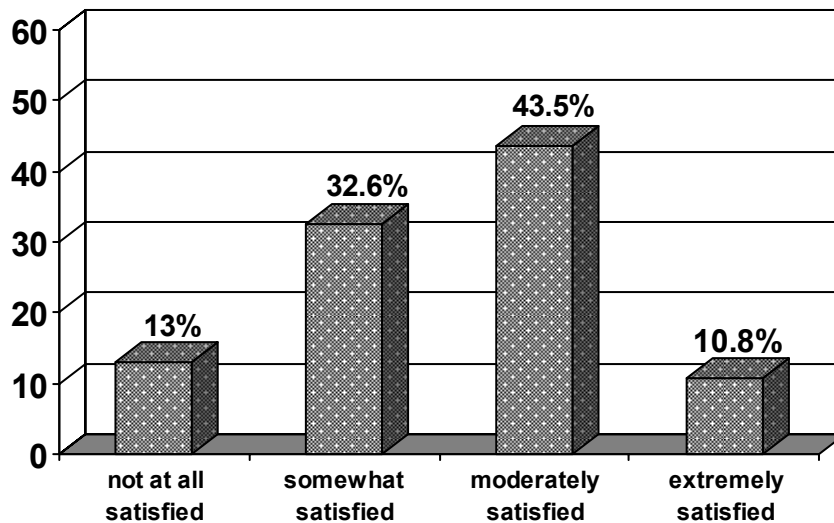


### What type of game do you hunt at Coopers Rock?



- All of the hunters that participated in the survey have hunted deer at CRSF.
- Squirrels (23%) and Turkey (20%) were also popular game at CRSF.
- n = 96.

### How satisfied are you with hunting at Coopers Rock?



- Almost half of the respondents (43%) were moderately satisfied with their hunting experience at CRSF, while 11% were extremely satisfied.
- One-third (33%) of the hunters were somewhat satisfied.
- A sizeable amount of CRSF hunters (13%) were not at all satisfied with their experience.
- n = 92.

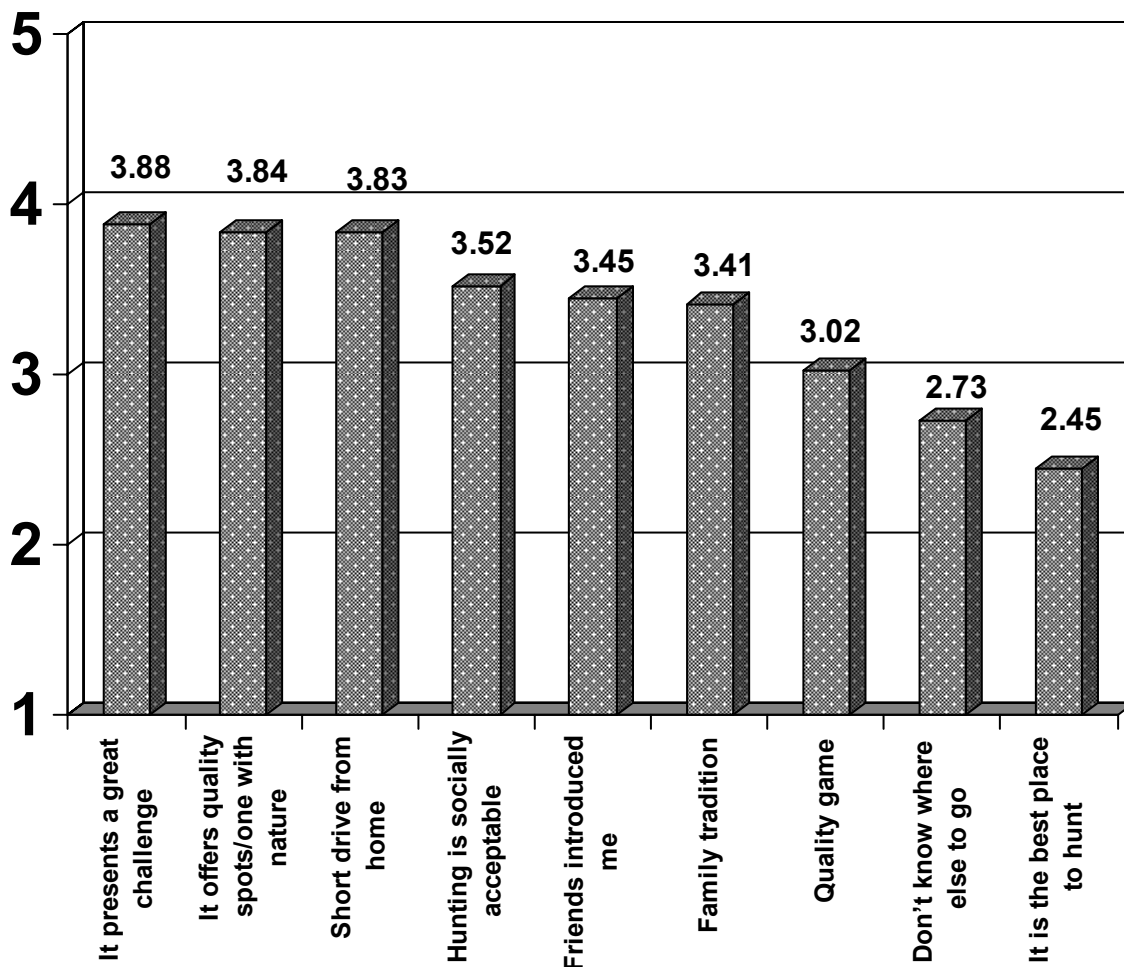
## How important are the following reasons as to why you may hunt at CRSF?

### Importance of experience

### Mean

It presents a great challenge	3.88
It offers quality spots that make me feel one with nature	3.84
Short drive from home	3.83
Hunting is socially acceptable by other recreation users	3.52
Friends introduced me	3.45
Family tradition	3.41
Quality game	3.02
Don't know where else to go	2.73
It is the best place to hunt	2.45

Note. Response Code: 1 = "not at all important" to 5 = "extremely important". n = 79.



- Hunters at CRSF most highly value the challenge of the hunt, the oneness with nature that CRSF allows for, and the close proximity that CRSF is to their home.
- n = 79